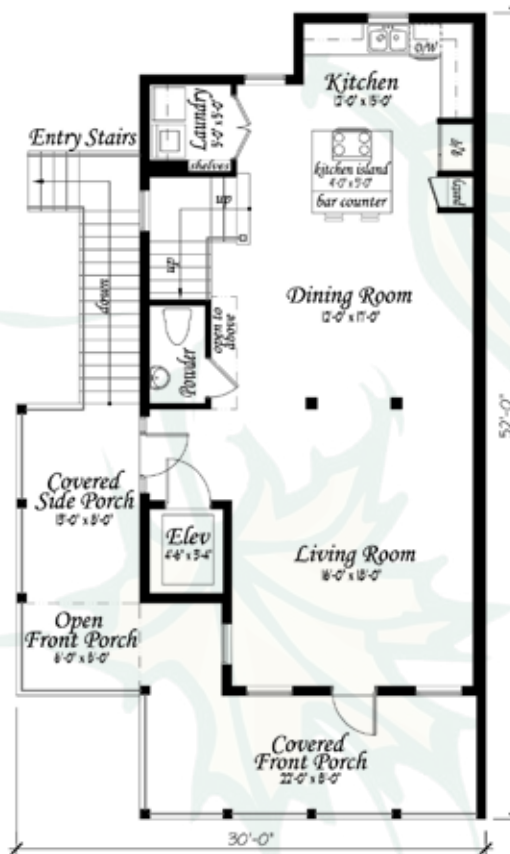
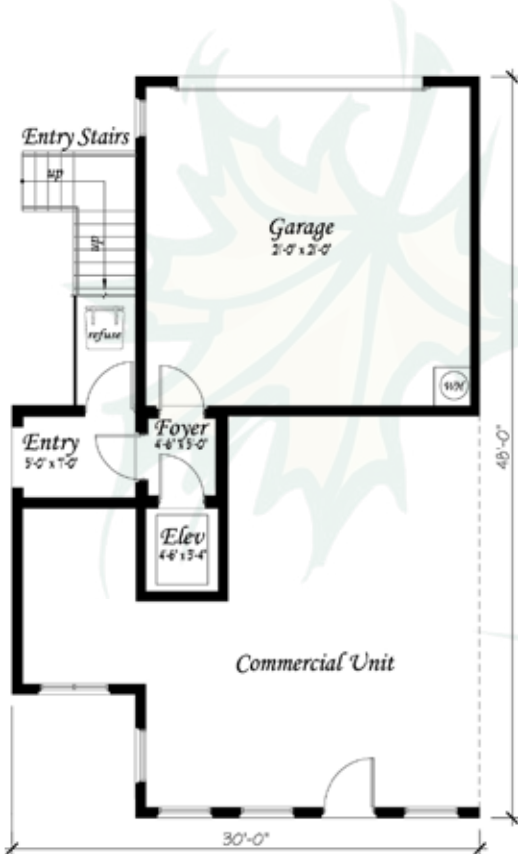


Grandview...on the St. Marys



FIRST FLOOR	
CONDITIONED AREA	22
UNCONDITIONED AREA	435
PORCHES	40

SECOND FLOOR	
CONDITIONED AREA	800
UNCONDITIONED AREA	N/A
PORCHES	355

THIRD FLOOR	
CONDITIONED AREA	800
UNCONDITIONED AREA	N/A
PORCHES	200

UNIT TOTAL	CONDITIONED AREA: 1622	UNCONDITIONED AREA: 435	PORCHES: 595
------------	------------------------	-------------------------	--------------



1209 East King Avenue • Kingsland, Georgia 31548
 (912) 729-3564 • www.whgross.com



Grandview on the St. Marys



W.H. Gross
Construction Company

1209 East King Avenue • Kingsland, Georgia 31548
(912) 729-3564 • www.whgross.com

BUILDING 1

FIRST FLOOR - COMMERCIAL UNIT
APPROXIMATELY 1,150 SQ. FT.
SECOND & THIRD FLOORS
TWO RESIDENTIAL CONDOMINIUMS
APPROXIMATELY 1,622 SQ. FT. EACH

BUILDING 2

FIRST FLOOR - COMMERCIAL UNIT
APPROXIMATELY 972 SQ. FT.
SECOND & THIRD FLOORS
TWO RESIDENTIAL CONDOMINIUMS
APPROXIMATELY 1,622 SQ. FT. EACH

BUILDING 3

FIRST FLOOR - COMMERCIAL UNIT
APPROXIMATELY 435 SQ. FT.
SECOND & THIRD FLOORS
ONE RESIDENTIAL CONDOMINIUM
APPROXIMATELY 1,618 SQ. FT.

BUILDING 4

FIRST FLOOR - COMMERCIAL UNIT
APPROXIMATELY 435 SQ. FT.
SECOND & THIRD FLOORS
ONE RESIDENTIAL CONDOMINIUM
APPROXIMATELY 1,618 SQ. FT.